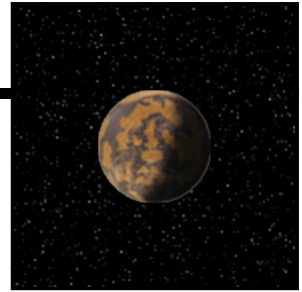


## Jump-2, 35 parsecs, 18 jumps

2	<b>Zesh</b> Fornast 2511	Class B			Third Imperium, Domain of Sylea
2	<b>Blaide</b> Fornast 2712	Class B	Gas Giant		Third Imperium, Domain of Sylea
2	<b>Liikham</b> Fornast 2911	Class B			Third Imperium, Domain of Sylea
2	<b>Toza</b> Fornast 2909	Class A	Gas Giant		Third Imperium, Domain of Sylea
2	<b>Gautier</b> Fornast 3007	Class C			Third Imperium, Domain of Sylea
2	<b>Gannvair</b> Fornast 3206	Class A	Gas Giant		Third Imperium, Domain of Sylea
2	<b>Alsuy</b> Ley 0205	Class E	Gas Giant		Third Imperium, Domain of Gateway
2	<b>Banir</b> Ley 0404	Class C	Gas Giant		Third Imperium, Domain of Gateway
2	<b>Ku</b> Ley 0402	Class B	Gas Giant		Third Imperium, Domain of Gateway
2	<b>Gig</b> Ley 0601	Class D	Gas Giant		Third Imperium, Domain of Gateway
2	<b>Shuura</b> Empty Quarter 0840	Class C	Gas Giant		Third Imperium, Domain of Antares
2	<b>Dheeraj</b> Empty Quarter 1039	Class E	Gas Giant		Third Imperium, Domain of Antares
2	<b>Praveer</b> Empty Quarter 1238	Class C	Gas Giant		Third Imperium, Domain of Antares
2	<b>Ankheal</b> Empty Quarter 1337	Class C			Third Imperium, Domain of Antares
2	<b>Pamushgar</b> Empty Quarter 1537	Class C	Gas Giant	<b>AMBER ZONE</b>	Third Imperium, Domain of Antares
2	<b>Takoda</b> Empty Quarter 1737	Class C	Gas Giant		Third Imperium, Domain of Antares
2	<b>Iisdirrii</b> Empty Quarter 1937	Class D	Gas Giant	<b>AMBER ZONE</b>	Third Imperium, Domain of Antares
1	<b>Faust</b> Empty Quarter 2138	Class C	Gas Giant		Third Imperium, Domain of Antares
	<b>Wapeka</b> Empty Quarter 2237	Class E	Gas Giant	<b>AMBER ZONE</b>	Third Imperium, Domain of Antares

Route planning is another Imperium-wide benefit of membership in the **Travellers' Aid Society** — *Faithfully Serving Travellers Since The Year Zero*. TAS facilities are available at your local class A or B starport. The *Traveller* game in all forms is owned by Far Future Enterprises. Copyright © 1977 – 2018 Far Future Enterprises.

# Zesh / Sanny (Fornast 2511)



**Allegiance:** Third Imperium, Domain of Sylea (ImDc)

**System:** K7 V

**0** Gas Giants — **0** Planetoid Belts — **14** Other Worlds  
Naval Base

**Universal World Profile:** B 4 2 5 6 5 5 - C

Starport (Good)	┌	┌	┌	┌	┌	┌	┌	Technology Level (Average Imperial)
Size (6,400km)	┌	┌	┌	┌	┌	┌	┌	Law Level (Personal concealable weapons prohibited)
Atmosphere (Very thin; Tainted)	┌	┌	┌	┌	┌	┌	┌	Government Type (Feudal Technocracy)
Hydrosphere (50%)	┌	┌	┌	┌	┌	┌	┌	Population (Millions)

**Importance {Ix}:** { 1 } Ordinary

**Economics (Ex):** ( 8 5 5 -1 )

Resources (Moderate)	┌	┌	┌	┌	┌	┌	┌	Efficiency (Average)
Labor (Hundreds of thousands)	┌	┌	┌	┌	┌	┌	┌	Infrastructure (Limited)

**Culture [Cx]:** [ 4 7 3 A ]

Homogeneity (Harmonious)	┌	┌	┌	┌	┌	┌	┌	Symbols (10)
Acceptance (Aloof)	┌	┌	┌	┌	┌	┌	┌	Strangeness (3)

**Total Population:**  $7 \times 10^6 = 7,000,000$

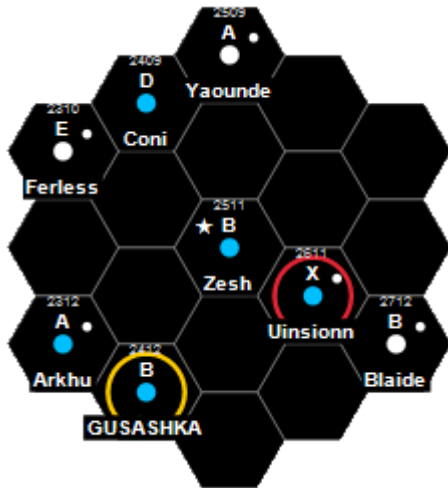
**Nobility:** Knight

**Remarks:** Ni Non-Industrial

**Travel Zone:** No Restrictions

Travellers' Aid Society Rating: Green

## Jump-2 Neighborhood



Name	Hex	UWP	B	Remarks	Z	PBG	A	Stellar
Coni	2409	D545221-7	Lo		210	ImDc	M2 V	
Yaounde	2509	A512444-E	Ic Ni		913	ImDc	M9 III	
Ferless	2310	E200254-7	Lo Va		715	ImDc	M2 V	
Zesh	2511	B425655-C	N Ni		700	ImDc	K7 V	
Uinsionn	2611	X86A551-5	Ni Wa Pr Fo	R	312	ImDc	M1 V	
Arkhu	2312	A677202-E	Lo		804	ImDc	G2 V M0 V	
GUSASHKA	2412	B5899DC-8	Hi Pr Pz	A	400	ImDc	G0 V	
Blaide	2712	B430534-D	De Ni Po		203	ImDc	M1 V M2 V	

# Zesh (world)

From Traveller Wiki - Science-Fiction Adventure in the Far future

**Zesh** is a nonindustrial world, that requires extensive imports of outside technology to maintain a modern, star-faring society.

- In a technological universe, societies without industrial capability generally suffer as nearly all manufactured and high tech goods must be brought in at significant cost.
- As a nonindustrial world, it requires extensive imports of outside technology to maintain a modern, star-faring society. The need to import most manufactured and high technology goods drives the price of these goods up in the open market.
- This a "high technology" world with technology achievements at, near, or over technology standards for Charted Space.
- It is a member of the Third Imperium in the Sanny Subsector of Fornast Sector in the Domain of Sylea.
- This world has a nearby Imperial Naval Base, capable of handling warships.

## Contents

- 1 Description (Astrography & Planetology)
  - 1.1 Monostellar System
- 2 History & Background (Dossier)
  - 2.1 Imperial High (Landed) Nobility
- 3 References & Contributors (Sources)

## Description (Astrography & Planetology)

No information yet available.

### Monostellar System

Zesh Monostellar System				
Star Name	Hierarchy	Color	Classification	Remarks
Zesh Primary	Primary	Orange	K7 V	

## History & Background (Dossier)

No information yet available.

### Imperial High (Landed) Nobility

**Zesh**, as a member world of the Third Imperium has a member of the Imperial Nobility overseeing the world.

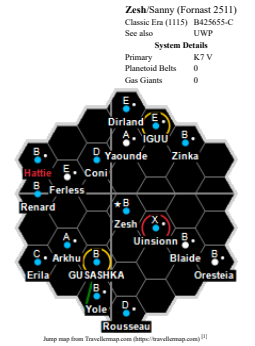
- It holds the estate of an Imperial knight.

## References & Contributors (Sources)

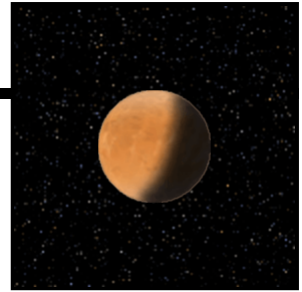
Retrieved from "http://wiki.travellerrpg.com/index.php?title=Zesh\_(world)&oldid=183843"

Categories: Worlds | Domain of Sylea worlds | Third Imperium worlds | Worlds with a Naval Base | Era: Milieu 1116 | T5 Second Survey worlds | Library | Canon | Z

- This page was last modified on 27 April 2016, at 15:54.
- Content is available under Traveller Copyright.



# Blaide / Sanny (Fornast 2712)



**Allegiance:** Third Imperium, Domain of Sylea (ImDc)

**System:** M1 V — M2 V  
3 Gas Giants — 0 Planetoid Belts — 2 Other Worlds

**Universal World Profile:** B 4 3 0 5 3 4 - D

Starport (Good)	┌	┌	┌	┌	┌	┌	Technology Level (Above Average Imperial)
Size (6,400km)	┌	┌	┌	┌	┌	┌	Law Level (Light assault weapons prohibited)
Atmosphere (Very thin)	┌	┌	┌	┌	┌	┌	Government Type (Self-Perpetuating Oligarchy)
Hydrosphere (Desert World)	┌	┌	┌	┌	┌	┌	Population (Hundreds of thousands)

**Importance {Ix}:** { 1 } Ordinary

**Economics (Ex):** ( A 4 5 -1 )

Resources (Abundant)	┌	┌	┌	┌	┌	Efficiency (Average)
Labor (Tens of thousands)	┌	┌	┌	┌	┌	Infrastructure (Limited)

**Culture [Cx]:** [ 3 6 3 B ]

Homogeneity (Monolithic)	┌	┌	┌	┌	┌	Symbols (11)
Acceptance (Aloof)	┌	┌	┌	┌	┌	Strangeness (3)

**Total Population:**  $2 \times 10^5 = 200,000$

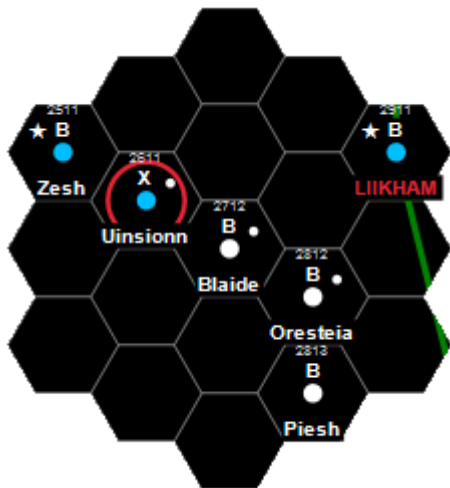
**Nobility:** Knight

**Remarks:** De Desert Ni Non-Industrial Po Poor

**Travel Zone:** No Restrictions

Travellers' Aid Society Rating: Green

## Jump-2 Neighborhood



Name	Hex	UWP	B	Remarks	Z	PBG	A	Stellar
Zesh	2511	B425655-C	N	Ni		700	ImDc	K7 V
Uinsionn	2611	X86A551-5		Ni Wa Pr Fo	R	312	ImDc	M1 V
LIKHAM	2911	B422A99-F	N	He Hi In Na Po Cp		120	ImDc	K2 V
Blaide	2712	B430534-D		De Ni Po		203	ImDc	M1 V M2 V
Oresteia	2812	B310261-D		Lo O:2911		103	ImDc	G5 V M2 V
Piesh	2813	BAA8223-C		Fl Lo		710	ImDc	G0 V

# Blaide (world)

From Traveller Wiki - Science-Fiction Adventure in the Far future

**Blaide** is a poor, nonindustrial desert world with no free-standing water.

- It requires extensive imports of outside technology to maintain a modern, star-faring society. Having to import most manufactured and high tech goods drives the price up for these items at this world.
- This a "high technology" world with technology achievements at, near, or over technology standards for Charted Space.
- It is a member of the Third Imperium in the Sanny Subsector of the Fornast Sector in the Domain of Sylea.

## Contents

- 1 Description (Astrography & Planetology)
  - 1.1 Binary Solar System
- 2 History & Background (Dossier)
  - 2.1 Imperial High (Landed) Nobility
- 3 References & Contributors (Sources)

## Description (Astrography & Planetology)

No information yet available.

### Binary Solar System

**Blaide Binary Star System**

Star Name	Hierarchy	Color	Classification	Remarks
<b>Blaide Primary</b>	Primary	Red	M1 V	
<b>Blaide Companion</b>	Secondary	Red	M2 V	

## History & Background (Dossier)

No information yet available.

### Imperial High (Landed) Nobility

**Blaide**, as a member world of the Third Imperium has a member of the Imperial Nobility overseeing the world.

- It holds the estate of an Imperial knight.

## References & Contributors (Sources)

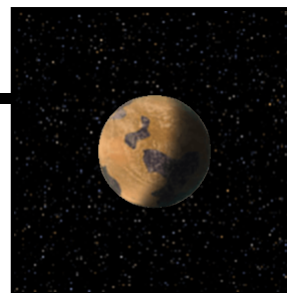
Retrieved from "http://wiki.travellerrpg.com/index.php?title=Blaide\_(world)&oldid=183792"

Categories: Worlds | Domain of Sylea worlds | Third Imperium worlds | Binary Star System | Era: Milieu 1116 | T5 Second Survey worlds | Library | Canon | B

- This page was last modified on 27 April 2016, at 14:42.
- Content is available under Traveller Copyright.



# Liikham / Sanny (Fornast 2911)



**Allegiance:** Third Imperium, Domain of Sylea (ImDc)

**System:** K2 V

0 Gas Giants — 2 Planetoid Belts — 15 Other Worlds  
Naval Base

**Universal World Profile:** B 4 2 2 A 9 9 - F

Starport (Good) — Technology Level (Technical Imperial Maximum)  
Size (6,400km) — Law Level (Possession of weapons outside the home prohibited)  
Atmosphere (Very thin; Tainted) — Government Type (Impersonal Bureaucracy)  
Hydrosphere (20%) — Population (Tens of billions)

**Importance {Ix}: { 4 }** Important

**Economics (Ex): ( E 9 G +5 )**

Resources (Extremely abundant) — Efficiency (Very advanced)  
Labor (Billions) — Infrastructure (Very comprehensive)

**Culture [Cx]: [ B E 6 G ]**

Homogeneity (Discordant) — Symbols (16)  
Acceptance (Extremely xenophilic) — Strangeness (6)

**Total Population:**  $1 \times 10^{10} = 10,000,000,000$

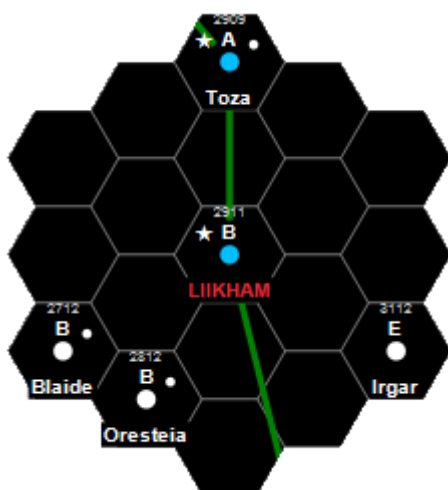
**Nobility:** Knight — Count — Subsector Duke

**Remarks:** He Hellworld Hi High Population In Industrialized Na Non-Agricultural Po Poor Cp Subsector Capital

**Travel Zone:** No Restrictions

Travellers' Aid Society Rating: Green

## Jump-2 Neighborhood



Name	Hex	UWP	B	Remarks	Z	PBG	A	Stellar
Toza	2909	A426868-C	N	Ph Pi Mr	124	ImDc	G7 IV	
LIKHAM	2911	B422A99-F	N	He Hi In Na Po Cp	120	ImDc	K2 V	
Blaide	2712	B430534-D		De Ni Po	203	ImDc	M1 V M2 V	
Oresteia	2812	B310261-D		Lo O:2911	103	ImDc	G5 V M2 V	
Irgar	3112	E30277B-8		Ic Na Va Pi	620	ImDc	K3 V M3 V	

# Liikham (world)

From Traveller Wiki - Science-Fiction Adventure in the Far future

**Liikham** is a poor, non-agricultural and industrial high-population hellworld with a billion or more sophonts in size who still struggle to survive in an inhospitable environment.

- Hellworlds often offer daily, and sometimes even hourly, life-threatening situations to their inhabitants. Survivors often form intense survival skills and tend to be grim realists.
- It is unable to produce quality foodstuffs and must import them.
- As an industrial world, this planet has well-developed manufacturing and processing industries. Manufactured goods are a major export item.
- The world serves as the subsector capital.
- This a "high technology" world with technology achievements at, near, or over technology standards for Charted Space.
- It is a member of the Third Imperium in the Sanny Subsector of Fornast Sector in the Domain of Sylea.
- This world has a nearby Imperial Naval Base, capable of handling warships.
- This world has a colony at Oresteia (world).

## Contents

- 1 Description (Astrography & Planetology)
  - 1.1 Monostellar System
- 2 History & Background (Dossier)
  - 2.1 Imperial High (Landed) Nobility
- 3 References & Contributors (Sources)

## Description (Astrography & Planetology)

No information yet available.

### Monostellar System

Liikham Monostellar System				
Star Name	Hierarchy	Color	Classification	Remarks
<b>Liikham Primary</b>	Primary	Orange	K2 V	

## History & Background (Dossier)

No information yet available.

### Imperial High (Landed) Nobility

**Liikham**, as a member world of the Third Imperium, holds the estate of three members of the Imperial Nobility, who are charged with overseeing the world.

- It holds the estate of an Imperial knight.
- It holds the fiefdom of an Imperial count.
- It holds the fiefdom of an Imperial subsector duke.

## References & Contributors (Sources)

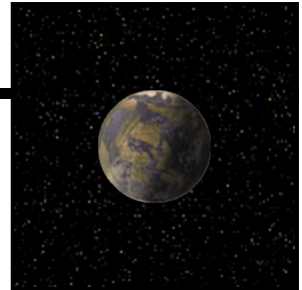
Retrieved from "http://wiki.travellerrpg.com/index.php?title=Liikham\_(world)&oldid=183816"

Categories: Worlds | Domain of Sylea worlds | Third Imperium worlds | Worlds with a Naval Base | Era: Milieu 1116 | T5 Second Survey worlds | Library | Canon | L

- This page was last modified on 27 April 2016, at 15:11.
- Content is available under Traveller Copyright.



# Toza / Toza (Fornast 2909)



**Allegiance:** Third Imperium, Domain of Sylea (ImDc)

**System:** G7 IV

4 Gas Giants — 2 Planetoid Belts — 3 Other Worlds  
Naval Base

**Universal World Profile:** A 4 2 6 8 6 8 - C

Starport (Excellent) — Technology Level (Average Imperial)  
Size (6,400km) — Law Level (Long bladed weapons controlled; open possession prohibited)  
Atmosphere (Very thin; Tainted) — Government Type (Captive Government / Colony)  
Hydrosphere (60%) — Population (Hundreds of millions)

**Importance {Ix}:** { 2 } Ordinary

**Economics (Ex):** ( G 7 C +2 )

Resources (Extremely abundant) — Efficiency (Good)  
Labor (Tens of millions) — Infrastructure (Very extensive)

**Culture [Cx]:** [ 8 A 5 C ]

Homogeneity (Discordant) — Symbols (12)  
Acceptance (Very friendly) — Strangeness (5)

**Total Population:**  $1 \times 10^8 = 100,000,000$

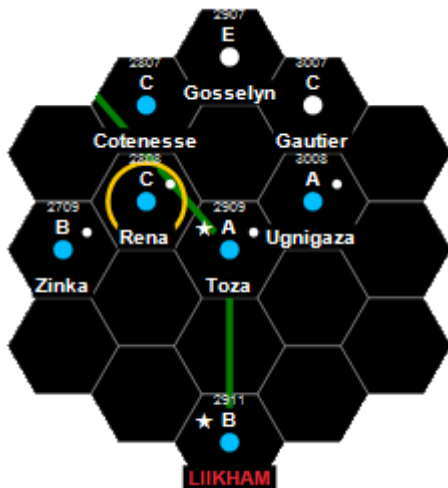
**Nobility:** Knight — Marquis — Viscount

**Remarks:** Ph Pre-High Population Pi Pre-Industrial Mr Military Rule

**Travel Zone:** No Restrictions

Travellers' Aid Society Rating: Green

## Jump-2 Neighborhood



Name	Hex	UWP	B	Remarks	Z	PBG	A	Stellar
Cotenesse	2807	C857774-8		Ag Ga	610	ImDc	M0 V	
Gosselyn	2907	E410768-8		Na Pi O:2909	810	ImDc	K7 III	
Gautier	3007	C560553-A		De Ni Pr	810	ImDc	M1 V	
Rena	2808	C85A79B-6		Wa Pz	A 704	ImDc	K3 V	
Ugnigaza	3008	A729230-D		Lo	302	ImDc	M1 V	
Zinka	2709	B77A576-C		Ni Wa Luri2	412	ImDc	M0 V	
Toza	2909	A426868-C	N	Ph Pi Mr	124	ImDc	G7 IV	
LIIKHAM	2911	B422A99-F	N	He Hi In Na Po Cp	120	ImDc	K2 V	



# Toza (world)

From Traveller Wiki - Science-Fiction Adventure in the Far future

**Toza** is a preindustrial, moderate population world with over a hundred million, but not yet at a billion sophonts in population size.

- As a preindustrial world, this planet cannot yet manufacture enough high-technology resources to support a modern, star-faring society. Having to import most manufactured and high tech goods drives the price up for these items at this world.
- This a "high technology" world with technology achievements at, near, or over technology standards for Charted Space.
- This world toils under the control of a military government with conditions reflecting that situation including curtailed civil rights and limited freedoms.
- It is a member of the Third Imperium in the Toza Subsector of Fornast Sector in the Domain of Sylea.
- This world has a nearby Imperial Naval Base, capable of handling warships.
- This world has a colony at Gosselyn (world).

## Contents

- 1 Description (Astrography & Planetology)
  - 1.1 Monostellar System
- 2 History & Background (Dossier)
  - 2.1 Imperial High (Landed) Nobility
- 3 References & Contributors (Sources)

## Description (Astrography & Planetology)

No information yet available.

### Monostellar System

Toza Monostellar System

Star Name	Hierarchy	Color	Classification	Remarks
<b>Toza Primary</b>	Primary	Yellow	G7 IV	

## History & Background (Dossier)

No information yet available.

### Imperial High (Landed) Nobility

**Toza**, as a member world of the Third Imperium, holds the estate of three members of the Imperial Nobility, who are charged with overseeing the world.

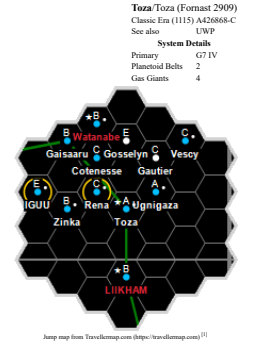
- It holds the estate of an Imperial knight.
- It holds the fiefdom of an Imperial marquis.
- It holds the fiefdom of an Imperial viscount.

## References & Contributors (Sources)

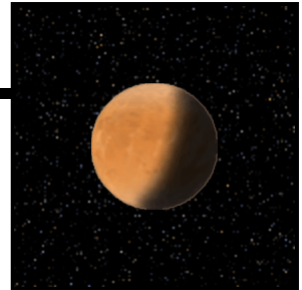
Retrieved from "http://wiki.travellerrpg.com/index.php?title=Toza\_(world)&oldid=176572"

Categories: Worlds | Domain of Sylea worlds | Third Imperium worlds | Worlds with a Naval Base | Era: Milieu 1116 | T5 Second Survey worlds | Library | Canon | T

- This page was last modified on 7 April 2016, at 22:59.
- Content is available under Traveller Copyright.



# Gautier / Toza (Fornast 3007)



**Allegiance:** Third Imperium, Domain of Sylea (ImDc)

**System:** M1 V  
0 Gas Giants — 1 Planetoid Belts — 2 Other Worlds

**Universal World Profile:** C 5 6 0 5 5 3 - A

Starport (Routine)	┌	┌	┌	┌	┌	┌	┌	Technology Level (Interstellar community)
Size (8,000km)	┌	┌	┌	┌	┌	┌	┌	Law Level (Machine guns, automatic rifles prohibited)
Atmosphere (Standard)	┌	┌	┌	┌	┌	┌	┌	Government Type (Feudal Technocracy)
Hydrosphere (Desert World)	┌	┌	┌	┌	┌	┌	┌	Population (Hundreds of thousands)

**Importance {Ix}: { 0 }** Unimportant

**Economics (Ex): ( 8 4 4 -3 )**

Resources (Moderate)	┌	┌	┌	┌	┌	┌	┌	Efficiency (Poor)
Labor (Tens of thousands)	┌	┌	┌	┌	┌	┌	┌	Infrastructure (Very limited)

**Culture [Cx]: [ 2 5 2 7 ]**

Homogeneity (Monolithic)	┌	┌	┌	┌	┌	┌	┌	Symbols (7)
Acceptance (Very aloof)	┌	┌	┌	┌	┌	┌	┌	Strangeness (2)

**Total Population:**  $8 \times 10^5 = 800,000$

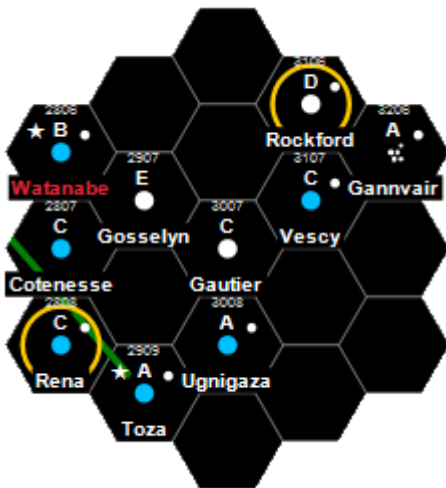
**Nobility:** Knight — Baronet

**Remarks:** De Desert Ni Non-Industrial Pr Pre-Rich

**Travel Zone:** No Restrictions

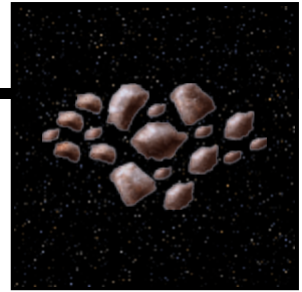
Travellers' Aid Society Rating: Green

## Jump-2 Neighborhood



Name	Hex	UWP	B	Remarks	Z	PBG	A	Stellar
Watanabe	2806	B684763-A	N	Ag Ri Cp Mr		101	ImDc	K1 V
Rockford	3106	D6B4300-8		Fl Lo Da	A	404	ImDc	K0 V
Gannvair	3206	A00025A-G		As Lo Va		512	ImDc	A7 III
Cotennesse	2807	C857774-8		Ag Ga		610	ImDc	M0 V
Gosselyn	2907	E410768-8		Na Pi O:2909		810	ImDc	K7 III
Gautier	3007	C560553-A		De Ni Pr		810	ImDc	M1 V
Vescy	3107	C584300-A		Lo		705	ImDc	K4 V
Rena	2808	C85A79B-6		Wa Pz	A	704	ImDc	K3 V
Ugnigaza	3008	A729230-D		Lo		302	ImDc	M1 V
Toza	2909	A426868-C	N	Ph Pi Mr		124	ImDc	G7 IV

# Gannvair / Toza (Fornast 3206)



**Allegiance:** Third Imperium, Domain of Sylea (ImDc)

**System:** A7 III  
 2 Gas Giants — 1 Planetoid Belts — 3 Other Worlds

**Universal World Profile:** A 0 0 0 2 5 A - G

Starport (Excellent)	┌	┌	┌	┌	┌	┌	Technology Level (Robots)
Size (Asteroid Belt)	┌	┌	┌	┌	┌	┌	Law Level (Weapon possession prohibited)
Atmosphere (No atmosphere)	┌	┌	┌	┌	┌	┌	Government Type (Feudal Technocracy)
Hydrosphere (Desert World)	┌	┌	┌	┌	┌	┌	Population (Hundreds)

**Importance {Ix}: { 2 }** Ordinary

**Economics (Ex): ( 7 1 1 +3 )**

Resources (Few)	┌	┌	┌	┌	┌	Efficiency (Improved)
Labor (Tens)	┌	┌	┌	┌	┌	Infrastructure (Extremely limited)

**Culture [Cx]: [ 4 4 7 J ]**

Homogeneity (Harmonious)	┌	┌	┌	┌	┌	Symbols (18)
Acceptance (Extremely aloof)	┌	┌	┌	┌	┌	Strangeness (7)

**Total Population:**  $5 \times 10^2 = 500$

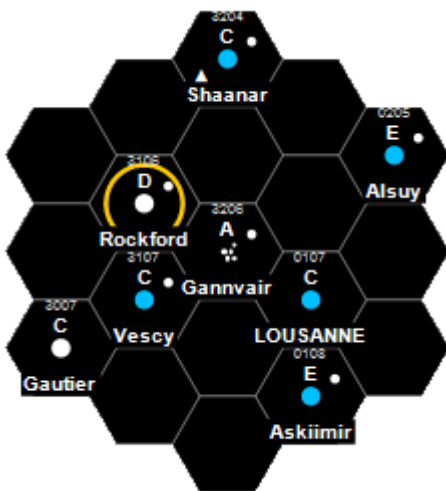
**Nobility:** Knight

**Remarks:** AS Asteroid Belt LO Low Population Va Vacuum World

**Travel Zone:** No Restrictions

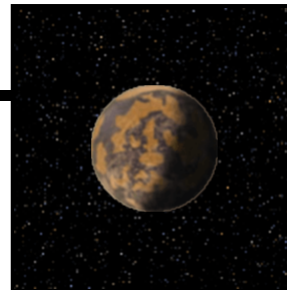
Travellers' Aid Society Rating: Green

## Jump-2 Neighborhood



Name	Hex	UWP	B	Remarks	Z	PBG	A	Stellar
Shaanar	3204	C846767-5	S	Ag Pi O:2806	113	ImDc	K3 V M1 V	
Alsuy	0205	E575520-5		Ag Ni	204	ImDg	K6 V	
Rockford	3106	D6B4300-8		Fl Lo Da	A 404	ImDc	K0 V	
Gannvair	3206	A00025A-G		As Lo Va	512	ImDc	A7 III	
Gautier	3007	C560553-A		De Ni Pr	810	ImDc	M1 V	
Vescy	3107	C584300-A		Lo	705	ImDc	K4 V	
LOUSANNE	0107	C564977-5		Hi Pr	700	ImDg	M1 V M9 V	
Askimir	0108	E79A642-7		Ni Wa	814	ImDg	K2 V M2 V	

# Alsuy / Ikhnaton (Ley 0205)



**Allegiance:** Third Imperium, Domain of Gateway (ImDg)

**System:** K6 V  
4 Gas Giants — 0 Planetoid Belts — 2 Other Worlds

**Universal World Profile:** E 5 7 5 5 2 0 - 5

Starport (Frontier Installation)	┌	┌	┌	┌	┌	┌	┌	┌	┌	Technology Level (Mass Production)
Size (8,000km)	┌	┌	┌	┌	┌	┌	┌	┌	┌	Law Level (No prohibitions)
Atmosphere (Standard; Tainted)	┌	┌	┌	┌	┌	┌	┌	┌	┌	Government Type (Participating Democracy)
Hydrosphere (50%)	┌	┌	┌	┌	┌	┌	┌	┌	┌	Population (Hundreds of thousands)

**Importance {Ix}: { -2 }** Very unimportant

**Economics (Ex): ( 7 4 2 -5 )**

Resources (Few)	┌	┌	┌	┌	┌	┌	┌	┌	┌	Efficiency (Extremely poor)
Labor (Tens of thousands)	┌	┌	┌	┌	┌	┌	┌	┌	┌	Infrastructure (Extremely limited)

**Culture [Cx]: [ 1 3 1 1 ]**

Homogeneity (Monolithic)	┌	┌	┌	┌	┌	┌	┌	┌	┌	Symbols (1)
Acceptance (Xenophobic)	┌	┌	┌	┌	┌	┌	┌	┌	┌	Strangeness (1)

**Total Population:**  $2 \times 10^5 = 200,000$

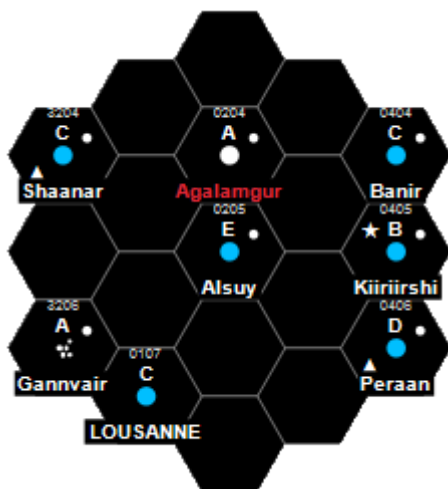
**Nobility:** Knight — Baron

**Remarks:** Ag Agricultural Ni Non-Industrial

**Travel Zone:** No Restrictions

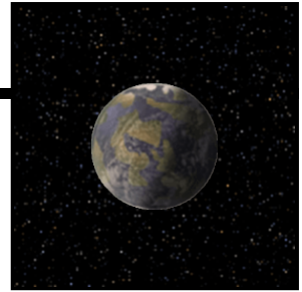
Travellers' Aid Society Rating: Green

## Jump-2 Neighborhood



Name	Hex	UWP	B	Remarks	Z	PBG	A	Stellar
Shaanar	3204	C846767-5	S	Ag Pi O:2806	113	ImDc	K3 V M1 V	
Agalamgur	0204	A30078A-B		Na Va Cp Pi	313	ImDg	M2 V M5 V	
Banir	0404	C57648A-5		Ni Pa	914	ImDg	G3 V M8 V	
Alsuy	0205	E575520-5		Ag Ni	204	ImDg	K6 V	
Kiiriirshi	0405	B534663-7	N	Ni Mr	813	ImDg	K3 V	
Gannvair	3206	A00025A-G		As Lo Va	512	ImDc	A7 III	
Peraan	0406	D865569-4	S	Ag Ni Ga Pr O:0705	903	ImDg	G4 V M0 V	
LOUSANNE	0107	C564977-5		Hi Pr	700	ImDg	M1 V M9 V	

# Banir / Ikhnaton (Ley 0404)



**Allegiance:** Third Imperium, Domain of Gateway (ImDg)

**System:** G3 V — M8 V

4 Gas Giants — 1 Planetoid Belts — 9 Other Worlds

**Universal World Profile:** C 5 7 6 4 8 A - 5

Starport (Routine)  Technology Level (Mass Production)  
 Size (8,000km)  Law Level (Weapon possession prohibited)  
 Atmosphere (Standard; Tainted)  Government Type (Civil Service Bureaucracy)  
 Hydrosphere (60%)  Population (Tens of thousands)

**Importance {Ix}: { -2 }** Very unimportant

**Economics (Ex): ( 6 3 1 +1 )**

Resources (Few)  Efficiency (Average)  
 Labor (Thousands)  Infrastructure (Extremely limited)

**Culture [Cx]: [ 6 2 7 7 ]**

Homogeneity (Harmonious)  Symbols (7)  
 Acceptance (Very xenophobic)  Strangeness (7)

**Total Population:**  $9 \times 10^4 = 90,000$

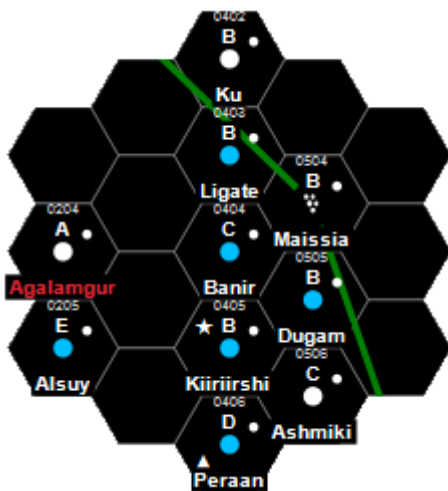
**Nobility:** Knight — Baronet

**Remarks:** Ni Non-Industrial Pa Pre-Agricultural

**Travel Zone:** No Restrictions

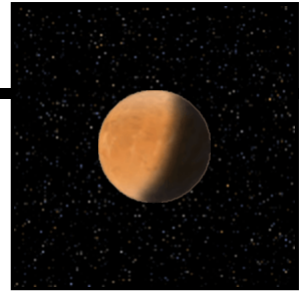
Travellers' Aid Society Rating: Green

## Jump-2 Neighborhood



Name	Hex	UWP	B	Remarks	Z	PBG	A	Stellar
Ku	0402	B430722-C		De Na Po	312	ImDg	M0 V	
Ligate	0403	B565564-6		Ag Ni Pr O:0204	401	ImDg	F6 V M8 V	
Agalamgur	0204	A30078A-B		Na Va Cp Pi	313	ImDg	M2 V M5 V	
Banir	0404	C57648A-5		Ni Pa	914	ImDg	G3 V M8 V	
Maissia	0504	B000531-B		As Ni Va	501	ImDg	M0 V M6 V	
Alsuy	0205	E575520-5		Ag Ni	204	ImDg	K6 V	
Kiirirshi	0405	B534663-7	N	Ni Mr	813	ImDg	K3 V	
Dugam	0505	B99A262-C		Lo Wa O:0705	914	ImDg	K8 V M9 V	
Peraan	0406	D865569-4	S	Ag Ni Ga Pr O:0705	903	ImDg	G4 V M0 V	
Ashmiki	0506	C200665-7		Na Ni Va O:0705	413	ImDg	M3 V	

# Ku / Ikhnaton (Ley O4O2)



**Allegiance:** Third Imperium, Domain of Gateway (ImDg)

**System:** M0 V  
2 Gas Giants — 1 Planetoid Belts — 2 Other Worlds

**Universal World Profile:** B 4 3 0 7 2 2 - C

Starport (Good)	┌	┌	┌	┌	Technology Level (Average Imperial)
Size (6,400km)	└	└	└	└	Law Level (Portable energy weapons prohibited)
Atmosphere (Very thin)	┌	┌	┌	┌	Government Type (Participating Democracy)
Hydrosphere (Desert World)	└	└	└	└	Population (Tens of millions)

**Importance {Ix}:** { 2 } Ordinary

**Economics (Ex):** ( C 6 C -2 )

Resources (Very abundant)	┌	┌	Efficiency (Fair)
Labor (Millions)	└	└	Infrastructure (Very extensive)

**Culture [Cx]:** [ 3 9 1 8 ]

Homogeneity (Monolithic)	┌	┌	Symbols (8)
Acceptance (Friendly)	└	└	Strangeness (1)

**Total Population:**  $3 \times 10^7 = 30,000,000$

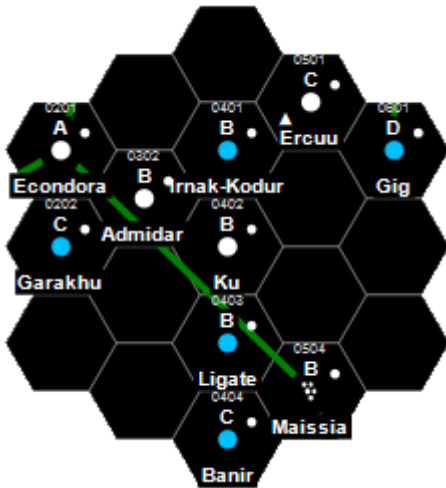
**Nobility:** Knight

**Remarks:** De Desert Na Non-Agricultural Po Poor

**Travel Zone:** No Restrictions

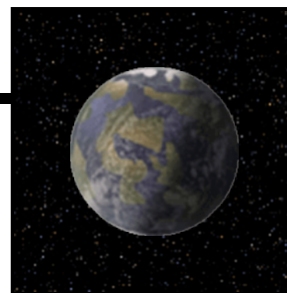
Travellers' Aid Society Rating: Green

## Jump-2 Neighborhood



Name	Hex	UWP	B	Remarks	Z	PBG	A	Stellar
Econdora	0201	A400674-E		Na Ni Va	914	ImDg	M2 V	
Irnak-Kodur	0401	B536442-B		Ni	513	ImDg	K0 V M2 V	
Ercuu	0501	C540367-9	S	De He Lo Po O:0402	903	ImDg	G6 V	
Gig	0601	D876640-6		Ag Ni	703	ImDg	F9 V	
Garakhu	0202	C536666-6		Na Ni Po O:0201	103	ImDg	M2 V	
Admidar	0302	B570430-7		De He Ni	403	ImDg	K1 V	
Ku	0402	B430722-C		De Na Po	312	ImDg	M0 V	
Ligate	0403	B565564-6		Ag Ni Pr O:0204	401	ImDg	F6 V M8 V	
Banir	0404	C57648A-5		Ni Pa	914	ImDg	G3 V M8 V	
Maissia	0504	B000531-B		As Ni Va	501	ImDg	M0 V M6 V	

# Gig / Ikhnaton (Ley 0601)



**Allegiance:** Third Imperium, Domain of Gateway (ImDg)

**System:** F9 V  
3 Gas Giants — 0 Planetoid Belts — 3 Other Worlds

**Universal World Profile:** D 8 7 6 6 4 0 - 6

Starport (Poor)	┌	┌	┌	┌	┌	┌	Technology Level (Nuclear Power)
Size (12,800km)	└	└	└	└	└	└	Law Level (No prohibitions)
Atmosphere (Standard; Tainted)	┌	┌	┌	┌	┌	┌	Government Type (Representative Democracy)
Hydrosphere (60%)	└	└	└	└	└	└	Population (Millions)

**Importance {Ix}: { -2 }** Very unimportant

**Economics (Ex): ( 8 5 2 -5 )**

Resources (Moderate)	┌	┌	┌	┌	┌	Efficiency (Extremely poor)
Labor (Hundreds of thousands)	└	└	└	└	└	Infrastructure (Extremely limited)

**Culture [Cx]: [ 1 4 1 1 ]**

Homogeneity (Monolithic)	┌	┌	┌	┌	Symbols (1)
Acceptance (Extremely aloof)	└	└	└	└	Strangeness (1)

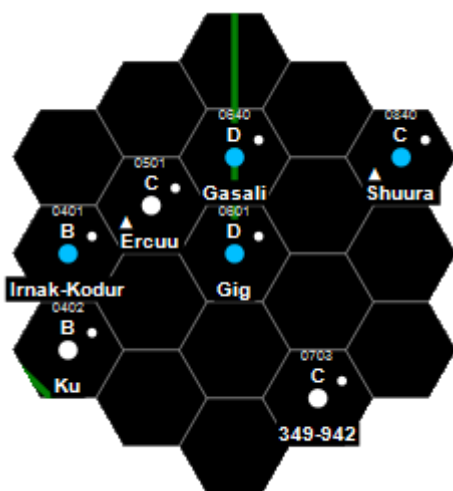
**Total Population:**  $7 \times 10^6 = 7,000,000$

**Nobility:** Knight — Baron

**Remarks:** Ag Agricultural Ni Non-Industrial

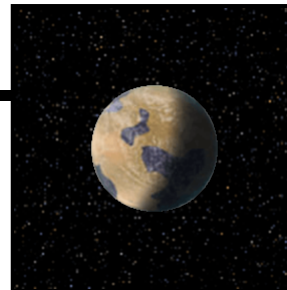
**Travel Zone:** No Restrictions  
Travellers' Aid Society Rating: Green

## Jump-2 Neighborhood



Name	Hex	UWP	B	Remarks	Z	PBG	A	Stellar
Gasali	0640	D736678-6	Ni		812	ImDa	M1 V M7 V	
Shuura	0840	C552231-7	S	Lo Po	124	ImDa	F7 V	
Irnak-Kodur	0401	B536442-B	Ni		513	ImDg	K0 V M2 V	
Ercuu	0501	C540367-9	S	De He Lo Po O:0402	903	ImDg	G6 V	
Gig	0601	D876640-6	Ag Ni		703	ImDg	F9 V	
Ku	0402	B430722-C	De Na Po		312	ImDg	M0 V	
349-942	0703	CAB786A-9	Fl Ph	O:0705	213	ImDg	G2 V	

# Shuura / Nulinad (Empty Quarter O840)



**Allegiance:** Third Imperium, Domain of Antares (ImDa)

**System:** F7 V

4 Gas Giants — 2 Planetoid Belts — 2 Other Worlds  
Scout Base

**Universal World Profile:** C 5 5 2 2 3 1 - 7

Starport (Routine)  Technology Level (Miniaturized Electronics)  
 Size (8,000km)  Law Level (Body pistols, explosives, and poison gas prohibited)  
 Atmosphere (Thin)  Government Type (Self-Perpetuating Oligarchy)  
 Hydrosphere (20%)  Population (Hundreds)

**Importance {Ix}: { -2 }** Very unimportant

**Economics (Ex): ( 4 1 1 -5 )**

Resources (Scarce)  Efficiency (Extremely poor)  
 Labor (Tens)  Infrastructure (Extremely limited)

**Culture [Cx]: [ 1 1 1 3 ]**

Homogeneity (Monolithic)  Symbols (3)  
 Acceptance (Extremely xenophobic)  Strangeness (1)

**Total Population:**  $1 \times 10^2 = 100$

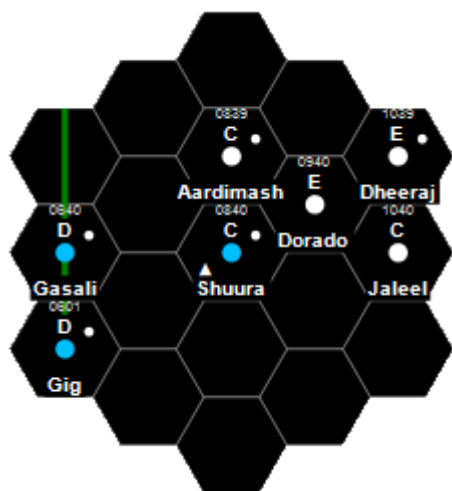
**Nobility:** Knight

**Remarks:** LO Low Population PO Poor

**Travel Zone:** No Restrictions

Travellers' Aid Society Rating: Green

## Jump-2 Neighborhood



Name	Hex	UWP	B	Remarks	Z	PBG	A	Stellar
Aardimash	0839	C530372-9		De Lo Po		224	ImDa	M3 V
Dheeraj	1039	E201367-9		Ic Lo Va O:1139		703	ImDa	M1 V
Gasali	0640	D736678-6		Ni		812	ImDa	M1 V M7 V
Shuura	0840	C552231-7	S	Lo Po		124	ImDa	F7 V
Dorado	0940	E8C6110-9		Fl Lo		800	ImDa	M3 V
Jaleel	1040	C310420-9		Ni		100	ImDa	K7 III
Gig	0601	D876640-6		Ag Ni		703	ImDg	F9 V



# Dheeraj / Gimushi (Empty Quarter 1039)



**Allegiance:** Third Imperium, Domain of Antares (ImDa)

**System:** M1 V

3 Gas Giants — 0 Planetoid Belts — 4 Other Worlds

**Universal World Profile:** E 2 0 1 3 6 7 - 9

Starport (Frontier Installation) — Technology Level (Anti-Gravity)  
 Size (3,200km) — Law Level (Shotguns prohibited)  
 Atmosphere (No atmosphere) — Government Type (Captive Government / Colony)  
 Hydrosphere (10%) — Population (Thousands)

**Importance {Ix}: { -2 }** Very unimportant

**Economics (Ex): ( 8 2 1 -2 )**

Resources (Moderate) — Efficiency (Fair)  
 Labor (Hundreds) — Infrastructure (Extremely limited)

**Culture [Cx]: [ 3 1 5 9 ]**

Homogeneity (Monolithic) — Symbols (9)  
 Acceptance (Extremely xenophobic) — Strangeness (5)

**Total Population:**  $7 \times 10^3 = 7,000$

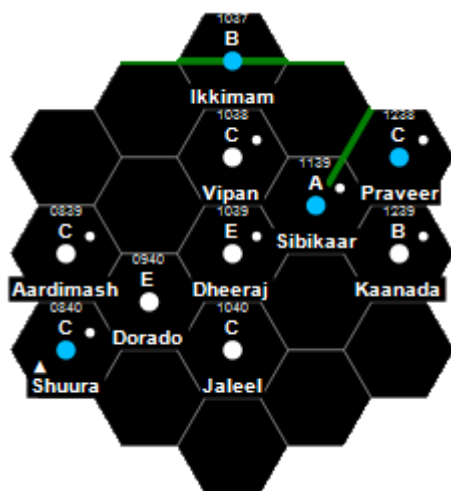
**Nobility:** Knight

**Remarks:** IC Ice Capped LO Low Population Va Vacuum World O:1139 Controlled

**Travel Zone:** No Restrictions

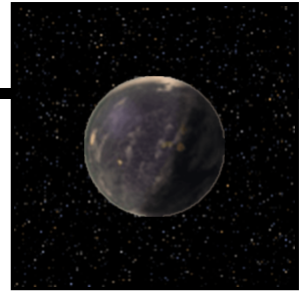
Travellers' Aid Society Rating: Green

## Jump-2 Neighborhood



Name	Hex	UWP	B	Remarks	Z	PBG	A	Stellar
Ikkimam	1037	B632543-9	Ni	Po	800	ImDa	F8 V	
Vipan	1038	CAB6315-8	Fl	Lo	811	ImDa	M8 V	
Praveer	1238	C69A210-9	Lo	Wa Bwap0	923	ImDa	G9 V M5 V	
Aardimash	0839	C530372-9	De	Lo Po	224	ImDa	M3 V	
Dheeraj	1039	E201367-9	Ic	Lo Va O:1139	703	ImDa	M1 V	
Sibikaar	1139	A659778-9			223	ImDa	G6 V G7 V	
Kaanada	1239	B550585-7	De	Ni Po	824	ImDa	G6 V	
Shuura	0840	C552231-7	S	Lo Po	124	ImDa	F7 V	
Dorado	0940	E8C6110-9	Fl	Lo	800	ImDa	M3 V	
Jaleel	1040	C310420-9	Ni		100	ImDa	K7 III	

# Praveer / Gimushi (Empty Quarter 1238)



**Allegiance:** Third Imperium, Domain of Antares (ImDa)

**System:** G9 V — M5 V  
3 Gas Giants — 2 Planetoid Belts — 3 Other Worlds

**Universal World Profile:** C 6 9 A 2 1 0 - 9

Starport (Routine) — Technology Level (Anti-Gravity)  
 Size (9,600km) — Law Level (No prohibitions)  
 Atmosphere (Dense; Tainted) — Government Type (Company/Corporation)  
 Hydrosphere (Water World) — Population (Hundreds)

**Importance {Ix}: { -1 }** Unimportant

**Economics (Ex): ( 9 1 1 -5 )**

Resources (Moderate) — Efficiency (Extremely poor)  
 Labor (Tens) — Infrastructure (Extremely limited)

**Culture [Cx]: [ 1 1 1 4 ]**

Homogeneity (Monolithic) — Symbols (4)  
 Acceptance (Extremely xenophobic) — Strangeness (1)

**Total Population:**  $9 \times 10^2 = 900$

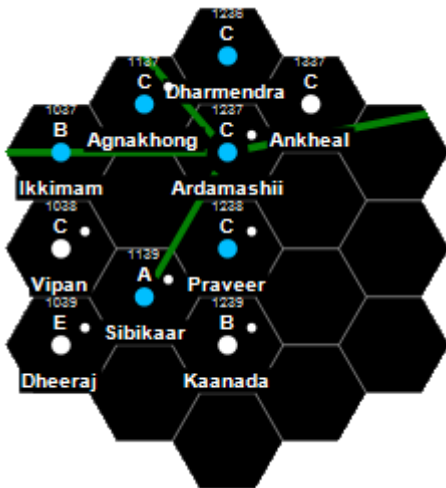
**Nobility:** Knight

**Remarks:** LO Low Population Wa Water World Bwap0 Bwaps, Population < 10%

**Travel Zone:** No Restrictions

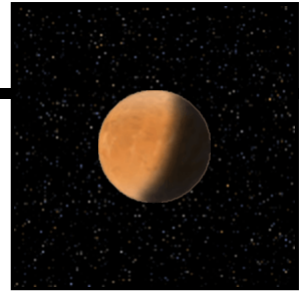
Travellers' Aid Society Rating: Green

## Jump-2 Neighborhood



Name	Hex	UWP	B	Remarks	Z	PBG	A	Stellar
Dharmendra	1236	C84A223-6	Lo	Wa Varg2	210	ImDa	K4 V M9 V	
Ikkimam	1037	B632543-9	Ni	Po	800	ImDa	F8 V	
Agnakhong	1137	C539444-8	Ni	VargW	725	ImDa	K9 V M5 V	
Ardamashii	1237	C525873-7	Ph	Pi Varg2 Bwap1	922	ImDa	G9 V	
Ankheal	1337	C430441-A	De	Ni Po	620	ImDa	M1 V M8 V	
Vipan	1038	CAB6315-8	Fl	Lo	811	ImDa	M8 V	
Praveer	1238	C69A210-9	Lo	Wa Bwap0	923	ImDa	G9 V M5 V	
Dheeraj	1039	E201367-9	lc	Lo Va O:1139	703	ImDa	M1 V	
Sibikaar	1139	A659778-9			223	ImDa	G6 V G7 V	
Kaanada	1239	B550585-7	De	Ni Po	824	ImDa	G6 V	

# Ankheal / Gimushi (Empty Quarter 1337)



**Allegiance:** Third Imperium, Domain of Antares (ImDa)

**System:** M1 V — M8 V  
 0 Gas Giants — 2 Planetoid Belts — 12 Other Worlds

**Universal World Profile:** C 4 3 0 4 4 1 - A

Starport (Routine)  Technology Level (Interstellar community)  
 Size (6,400km)  Law Level (Body pistols, explosives, and poison gas prohibited)  
 Atmosphere (Very thin)  Government Type (Representative Democracy)  
 Hydrosphere (Desert World)  Population (Tens of thousands)

**Importance {Ix}:** { 0 } Unimportant

**Economics (Ex):** ( 8 3 3 -4 )

Resources (Moderate)  Efficiency (Very poor)  
 Labor (Thousands)  Infrastructure (Very limited)

**Culture [Cx]:** [ 1 4 1 6 ]

Homogeneity (Monolithic)  Symbols (6)  
 Acceptance (Extremely aloof)  Strangeness (1)

**Total Population:**  $6 \times 10^4 = 60,000$

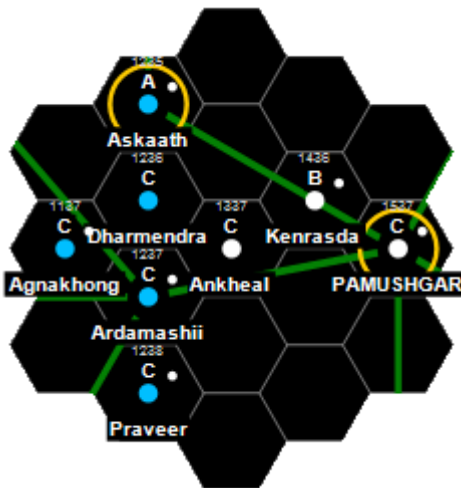
**Nobility:** Knight

**Remarks:** De Desert Ni Non-Industrial Po Poor

**Travel Zone:** No Restrictions

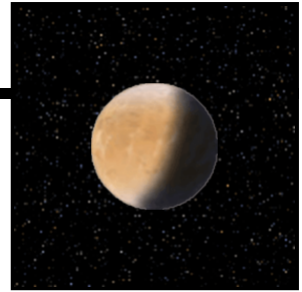
Travellers' Aid Society Rating: Green

## Jump-2 Neighborhood



Name	Hex	UWP	B	Remarks	Z	PBG	A	Stellar
Askaath	1235	A66589B-B		Ga Ri Pa Ph Pz Varg0	A	422	ImDa	M1 V M6 V
Dharmendra	1236	C84A223-6		Lo Wa Varg2		210	ImDa	K4 V M9 V
Kenrasda	1436	B540895-8		De He Po Ph Pi Varg0		624	ImDa	M2 V
Agnakhong	1137	C539444-8		Ni VargW		725	ImDa	K9 V M5 V
Ardamashii	1237	C525873-7		Ph Pi Varg2 Bwap1		922	ImDa	G9 V
Ankheal	1337	C430441-A		De Ni Po		620	ImDa	M1 V M8 V
PAMUSHGAR	1537	C54098B-A		De He Hi In Po Pz	A	834	ImDa	G0 V
Praveer	1238	C69A210-9		Lo Wa Bwap0		923	ImDa	G9 V M5 V

# Pamushgar / Gimushi (Empty Quarter 1537)



**Allegiance:** Third Imperium, Domain of Antares (ImDa)

**System:** G0 V  
4 Gas Giants — 3 Planetoid Belts — 3 Other Worlds

**Universal World Profile:** C 5 4 0 9 B B - A

Starport (Routine)	┌	┌	┌	┌	┌	Technology Level (Interstellar community)
Size (8,000km)	┌	┌	┌	┌	┌	Law Level (Rigid control of civilian movement)
Atmosphere (Thin; Tainted)	┌	┌	┌	┌	┌	Government Type (Non-Charismatic Dictator)
Hydrosphere (Desert World)	┌	┌	┌	┌	┌	Population (Billions)

**Importance {Ix}:** { 3 } Ordinary

**Economics (Ex):** ( J 8 D +5 )

Resources (Extremely abundant)	┌	┌	┌	┌	Efficiency (Very advanced)
Labor (Hundreds of millions)	┌	┌	┌	┌	Infrastructure (Comprehensive)

**Culture [Cx]:** [ B C 7 C ]

Homogeneity (Discordant)	┌	┌	┌	┌	Symbols (12)
Acceptance (Xenophilic)	┌	┌	┌	┌	Strangeness (7)

**Total Population:**  $8 \times 10^9 = 8,000,000,000$

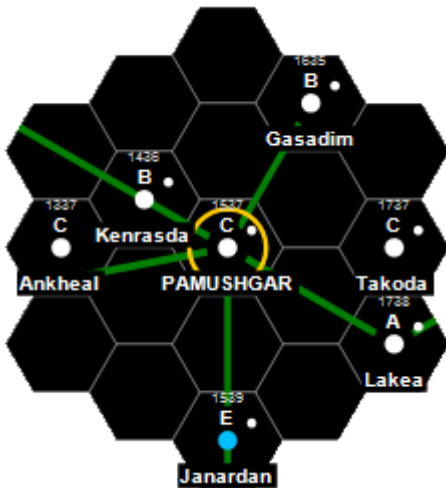
**Nobility:** Knight — Count

**Remarks:** De Desert He Hellworld Hi High Population In Industrialized Po Poor Pz Puzzle

**Travel Zone:** Caution

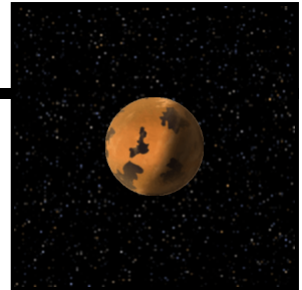
Travellers' Aid Society Rating: Amber

## Jump-2 Neighborhood



Name	Hex	UWP	B	Remarks	Z	PBG	A	Stellar
Gasadim	1635	B310879-7		Na Ph Pi		424	ImDa	G4 V M3 V
Kenrasda	1436	B540895-8		De He Po Ph Pi Varg0		624	ImDa	M2 V
Ankheal	1337	C430441-A		De Ni Po		620	ImDa	M1 V M8 V
PAMUSHGAR	1537	C5409BB-A		De He Hi In Po Pz	A	834	ImDa	G0 V
Takoda	1737	C311533-9		Ic Ni		124	ImDa	M9 III K7 V
Lakea	1738	A202623-D		Ic Na Ni Va		724	ImDa	M0 V
Janardan	1539	E545200-8		Lo		823	ImDa	G7 V M3 V

# Takoda / Udusis (Empty Quarter 1737)



**Allegiance:** Third Imperium, Domain of Antares (ImDa)

**System:** M9 III — K7 V

4 Gas Giants — 2 Planetoid Belts — 7 Other Worlds

**Universal World Profile:** C 3 1 1 5 3 3 - 9

Starport (Routine) — Technology Level (Anti-Gravity)  
 Size (4,800km) — Law Level (Machine guns, automatic rifles prohibited)  
 Atmosphere (Trace) — Government Type (Self-Perpetuating Oligarchy)  
 Hydrosphere (10%) — Population (Hundreds of thousands)

**Importance {Ix}:** { -1 } Unimportant

**Economics (Ex):** ( D 4 3 -4 )

Resources (Very abundant) — Efficiency (Very poor)  
 Labor (Tens of thousands) — Infrastructure (Very limited)

**Culture [Cx]:** [ 2 4 2 6 ]

Homogeneity (Monolithic) — Symbols (6)  
 Acceptance (Extremely aloof) — Strangeness (2)

**Total Population:**  $1 \times 10^5 = 100,000$

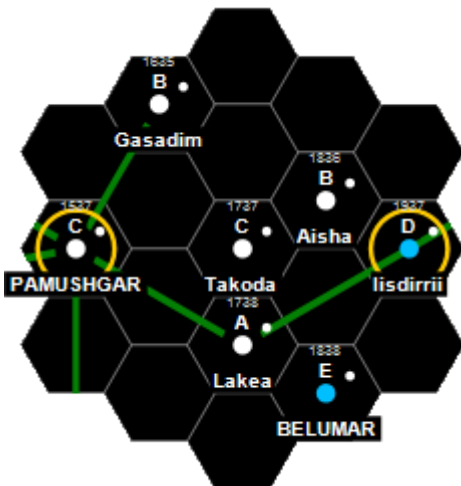
**Nobility:** Knight

**Remarks:** IC Ice Capped Ni Non-Industrial

**Travel Zone:** No Restrictions

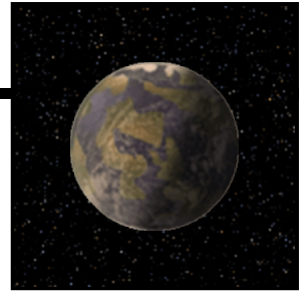
Travellers' Aid Society Rating: Green

## Jump-2 Neighborhood



Name	Hex	UWP	B	Remarks	Z	PBG	A	Stellar
Gasadim	1635	B310879-7		Na Ph Pi		424	ImDa	G4 V M3 V
Aisha	1836	B550563-A		De Ni Po O:2036		213	ImDa	G0 V M6 V
PAMUSHGAR	1537	C5409BB-A		De He Hi In Po Pz	A	834	ImDa	G0 V
Takoda	1737	C311533-9		Ic Ni		124	ImDa	M9 III K7 V
lisdirrii	1937	D8668D9-4		Ga Ri Pa Ph Pz Sydi2	A	124	ImDa	G9 V M5 V
Lakea	1738	A202623-D		Ic Na Ni Va		724	ImDa	M0 V
BELUMAR	1838	E663996-3		Hi Pr		413	ImDa	K3 V

# *lisdirrii / Udusis (Empty Quarter 1937)*



**Allegiance:** Third Imperium, Domain of Antares (ImDa)

**System:** G9 V — M5 V  
4 Gas Giants — 2 Planetoid Belts — 6 Other Worlds

**Universal World Profile:** D 8 6 6 8 D 9 - 4

Starport (Poor)	┌	┌	┌	┌	┌	Technology Level (External Combustion)
Size (12,800km)	┌	┌	┌	┌	┌	Law Level (Possession of weapons outside the home prohibited)
Atmosphere (Standard)	┌	┌	┌	┌	┌	Government Type (Religious Dictatorship)
Hydrosphere (60%)	┌	┌	┌	┌	┌	Population (Hundreds of millions)

**Importance {Ix}: { -1 }** Unimportant

**Economics (Ex): ( A 7 5 +1 )**

Resources (Abundant)	┌	┌	┌	┌	Efficiency (Average)
Labor (Tens of millions)	┌	┌	┌	┌	Infrastructure (Limited)

**Culture [Cx]: [ 9 7 6 5 ]**

Homogeneity (Discordant)	┌	┌	┌	┌	Symbols (5)
Acceptance (Aloof)	┌	┌	┌	┌	Strangeness (6)

**Total Population:**  $1 \times 10^8 = 100,000,000$

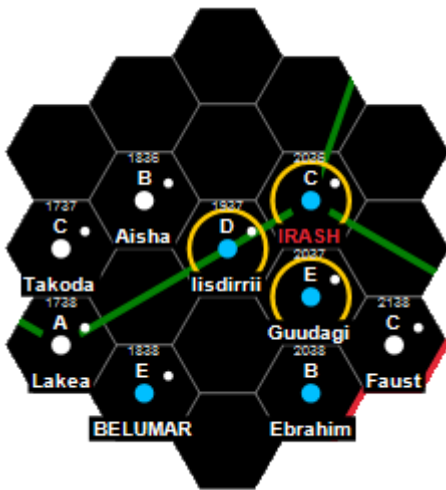
**Nobility:** Knight — Baronet — Baron — Viscount

**Remarks:** Ga Garden World Ri Rich Pa Pre-Agricultural Ph Pre-High Population Pz Puzzle  
Sydi2 Sydites, Population 20%

**Travel Zone:** Caution

Travellers' Aid Society Rating: Amber

## Jump-2 Neighborhood



Name	Hex	UWP	B	Remarks	Z	PBG	A	Stellar
Aisha	1836	B550563-A		De Ni Po O:2036		213	ImDa	G0 V M6 V
IRASH	2036	C99799B-A		Hi In Cp Pz	A	422	ImDa	F6 V M5 V
Takoda	1737	C311533-9		Ic Ni		124	ImDa	M9 III K7 V
lisdirrii	1937	D8668D9-4		Ga Ri Pa Ph Pz Sydi2	A	124	ImDa	G9 V M5 V
Guudagi	2037	E5556BC-4		Ag Ni Da	A	124	ImDa	G4 V
Lakea	1738	A202623-D		Ic Na Ni Va		724	ImDa	M0 V
BELUMAR	1838	E663996-3		Hi Pr		413	ImDa	K3 V
Ebrahim	2038	B695451-B		Ni Pa		310	ImDa	M2 V M3 V
Faust	2138	C511200-9		Ic Lo		424	ImDa	M2 V

# Faust / Uduis (Empty Quarter 2138)



**Allegiance:** Third Imperium, Domain of Antares (ImDa)

**System:** M2 V

4 Gas Giants — 2 Planetoid Belts — 2 Other Worlds

**Universal World Profile:** C 5 1 1 2 0 0 - 9

Starport (Routine) — Technology Level (Anti-Gravity)  
 Size (8,000km) — Law Level (No prohibitions)  
 Atmosphere (Trace) — Government Type (No Government Structure)  
 Hydrosphere (10%) — Population (Hundreds)

**Importance {Ix}: { -1 }** Unimportant

**Economics (Ex): ( A 1 1 -5 )**

Resources (Abundant) — Efficiency (Extremely poor)  
 Labor (Tens) — Infrastructure (Extremely limited)

**Culture [Cx]: [ 1 1 1 4 ]**

Homogeneity (Monolithic) — Symbols (4)  
 Acceptance (Extremely xenophobic) — Strangeness (1)

**Total Population:**  $4 \times 10^2 = 400$

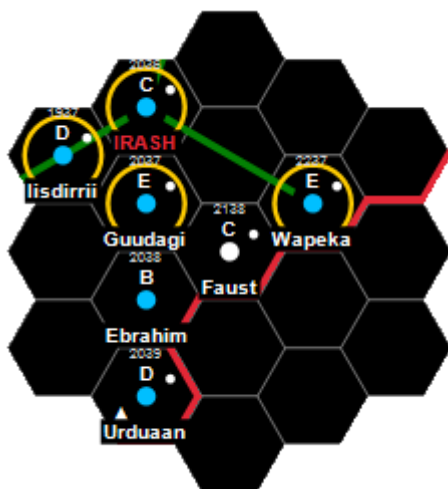
**Nobility:** Knight

**Remarks:** IC Ice Capped LO Low Population

**Travel Zone:** No Restrictions

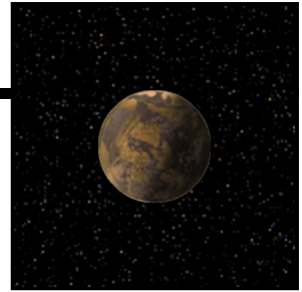
Travellers' Aid Society Rating: Green

## Jump-2 Neighborhood



Name	Hex	UWP	B	Remarks	Z	PBG	A	Stellar
IRASH	2036	C99799B-A		Hi In Cp Pz	A	422	ImDa	F6 V M5 V
Iisdirrii	1937	D8668D9-4		Ga Ri Pa Ph Pz Sydi2	A	124	ImDa	G9 V M5 V
Guudagi	2037	E5556BC-4		Ag Ni Da	A	124	ImDa	G4 V
Wapeka	2237	E426524-9		Ni Da	A	212	ImDa	M2 V
Ebrahim	2038	B695451-B		Ni Pa		310	ImDa	M2 V M3 V
Faust	2138	C511200-9		Ic Lo		424	ImDa	M2 V
Urduaan	2039	D87A754-5	S	Wa Pi		234	ImDa	K0 V

# Wapeka / Udusis (Empty Quarter 2237)



**Allegiance:** Third Imperium, Domain of Antares (ImDa)

**System:** M2 V

2 Gas Giants — 1 Planetoid Belts — 5 Other Worlds

**Universal World Profile:** E 4 2 6 5 2 4 - 9

Starport (Frontier Installation)  Technology Level (Anti-Gravity)  
 Size (6,400km)  Law Level (Light assault weapons prohibited)  
 Atmosphere (Very thin; Tainted)  Government Type (Participating Democracy)  
 Hydrosphere (60%)  Population (Hundreds of thousands)

**Importance {Ix}:** { -2 } Very unimportant

**Economics (Ex):** ( A 4 2 -4 )

Resources (Abundant)  Efficiency (Very poor)  
 Labor (Tens of thousands)  Infrastructure (Extremely limited)

**Culture [Cx]:** [ 3 3 3 7 ]

Homogeneity (Monolithic)  Symbols (7)  
 Acceptance (Xenophobic)  Strangeness (3)

**Total Population:** 2 × 10<sup>5</sup> = 200,000

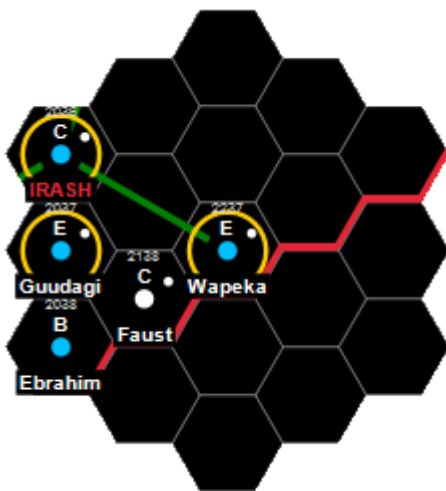
**Nobility:** Knight

**Remarks:** Ni Non-Industrial Da Danger

**Travel Zone:** Caution

Travellers' Aid Society Rating: Amber

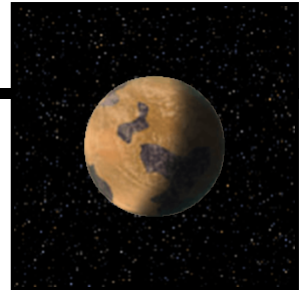
## Jump-2 Neighborhood



Name	Hex	UWP	B	Remarks	Z	PBG	A	Stellar
IRASH	2036	C99799B-A	Hi	In Cp Pz	A	422	ImDa	F6 V M5 V
Guudagi	2037	E5556BC-4	Ag	Ni Da	A	124	ImDa	G4 V
Wapeka	2237	E426524-9	Ni	Da	A	212	ImDa	M2 V
Ebrahim	2038	B695451-B	Ni	Pa		310	ImDa	M2 V M3 V
Faust	2138	C511200-9	Ic	Lo		424	ImDa	M2 V



# Yashodhan / Yashodhan (Empty Quarter 2635)



**Allegiance:** Non-Aligned, Human-dominated (NaHu)

**System:** K2 V — M2 V

0 Gas Giants — 0 Planetoid Belts — 9 Other Worlds  
Naval Base — Military Base

**Universal World Profile:** A 6 5 2 7 7 9 - C

Starport (Excellent)  Technology Level (Average Imperial)  
Size (9,600km)  Law Level (Possession of weapons outside the home prohibited)  
Atmosphere (Thin)  Government Type (Balkanization)  
Hydrosphere (20%)  Population (Tens of millions)

**Importance {Ix}:** { 3 } Ordinary

**Economics (Ex):** ( 9 6 D +4 )

Resources (Moderate)  Efficiency (Advanced)  
Labor (Millions)  Infrastructure (Comprehensive)

**Culture [Cx]:** [ 8 A 6 D ]

Homogeneity (Discordant)  Symbols (13)  
Acceptance (Very friendly)  Strangeness (6)

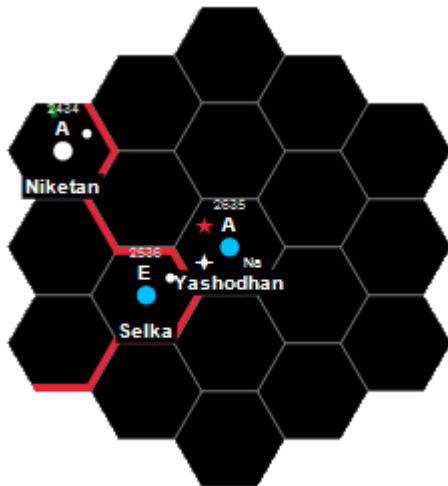
**Total Population:**  $3 \times 10^7 = 30,000,000$

**Remarks:** Po Poor

**Travel Zone:** No Restrictions

Travellers' Aid Society Rating: Green

## Jump-2 Neighborhood



Name	Hex	UWP	B	Remarks	Z	PBG	A	Stellar
Niketani	2434	A550567-D		De Ni Po O:2036	622	ImDa	G7 V M8 V	
Yashodhan	2635	A652779-C	KM	Po	300	NaHu	K2 V M2 V	
Selka	2536	E552454-7		Ni Po	321	ImDa	G3 V	